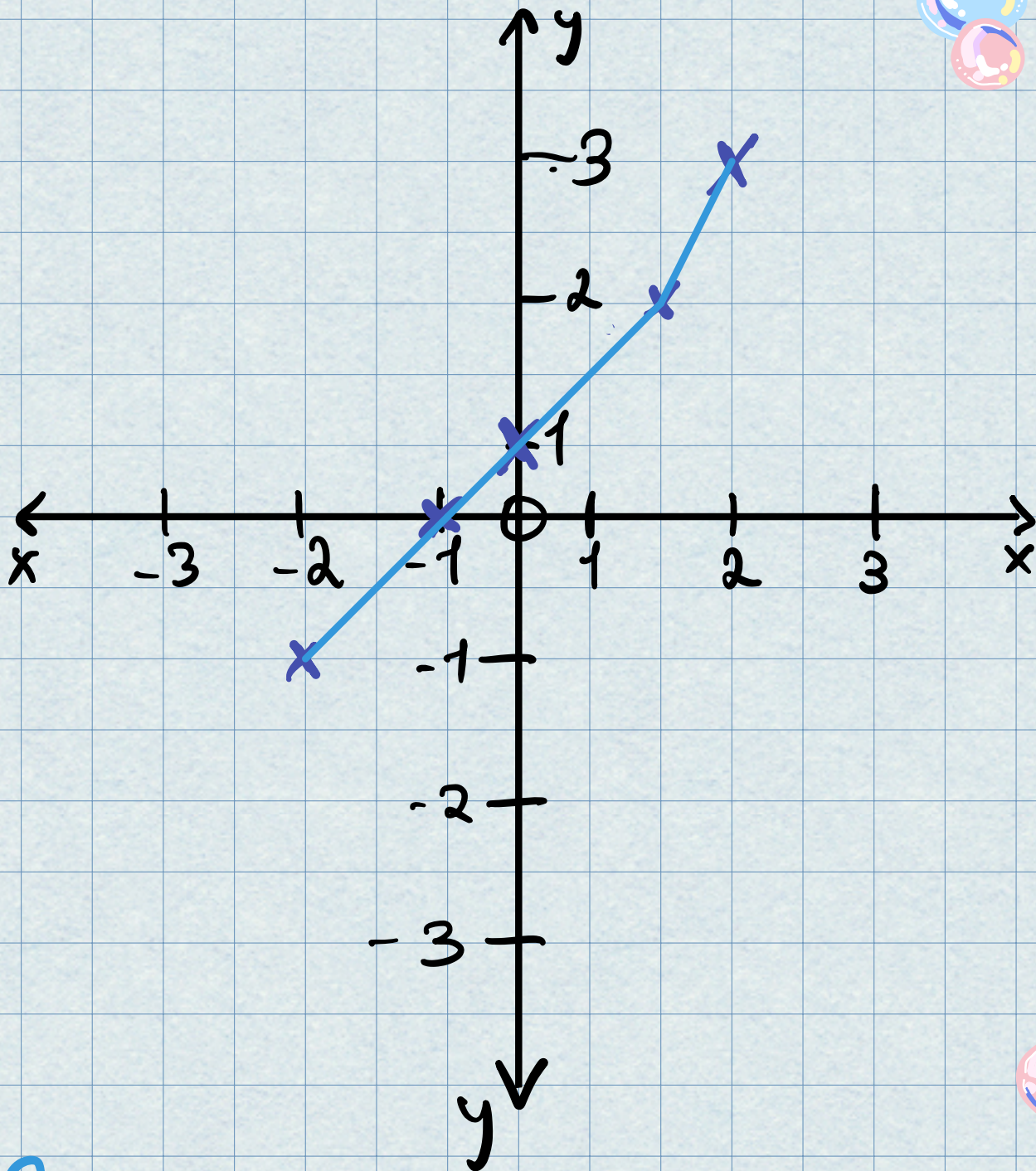


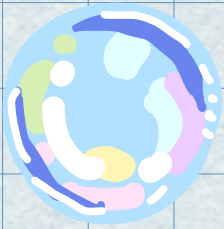
Plotting Line Graphs : Gradients



Gradient \rightarrow a measure of how steep the line is.

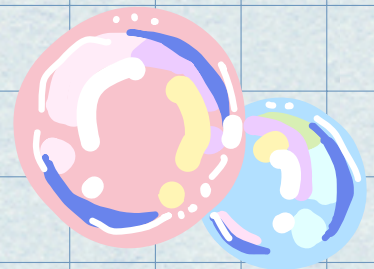
How to find the gradient:

Choose 2 points, create a triangle, measure the base and the height of the triangle, divide height by the base.



The y-intercept

⇒ point on y-axis where the line cuts the y-axis.





RECAP QUESTIONS



→ How do you find the gradient?

→ What is the y-intercept?

→ Plot these points on a graph:

$(1, 3)$ $(2, 6)$ $(0, 0)$

$(-1, -3)$ $(-2, -6)$

→ Find the gradient and y-intercept of the line you drew with the points above.

